

BergHOFF[®]

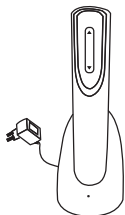
Yes, you're right!



G E M I N I S

ELECTRIC WINE OPENER

We recommend that you charge your corkscrew for at least eight hours before using it for the first time. Please follow the instructions for recharging below:

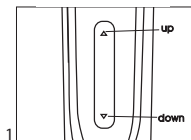


RECHARGING YOUR CORKSCREW

Plug one end of the adaptor cord into the base of the recharging unit and the other end into a mains socket. Place the corkscrew into recharging unit, ensuring that it is firmly in position and is fully engaged with the recharging connectors. It will take approximately 6-8 hours to recharge your corkscrew. When the corkscrew is fully recharged it can be used to open approximately 30 bottles.

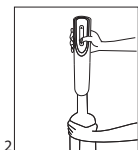
HOW TO OPERATE THE CORKSCREW

The corkscrew is operated by a one simple switch. The switch has two functions. Press the lower part of the switch to remove a cork from a bottle. Press the upper part of the switch to release a cork from the mechanism after you have removed it from the bottle. (See Pic 1)



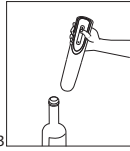
⚡ Before using the corkscrew, you must remove any foil from the top of the bottle using the foil cutter provided.

Place the corkscrew on the top of the wine bottle. Ensure that it remains as upright as possible at all the times. If you hold the corkscrew at an angle to the bottle, it will not remove the cork properly. (See Pic 2).



Hold the corkscrew firmly and depress the lower part of the switch. The corkscrew spiral will turn in a clockwise direction and enter the cork, then gradually remove it from the bottle. When the corkscrew mechanism stops, the cork has been fully removed from the bottle.

Lift the corkscrew away from the bottle. To remove the cork, simply depress the upper part of the switch. The spiral will turn in an anticlockwise direction and release the cork. (See Pic 3).



Always return the corkscrew to the recharging unit when ready. This will protect the mechanism while it is not in use.

Note:

It has been noted that the automatic corkscrew may experience problems with a small percentage of plastic / synthetic corks and undersized corks, if that's the case, please remove the cork manually.

PLEASE NOTE THESE IMPORTANT SAFETY POINTS WARNING.

When using this electrical appliance the following safety precautions should be taken to reduce the risk of fire, electric shock and personal injury.

Read all the instructions before use and save them for future reference.

When using or recharging the corkscrew keep your work surface clean and free from potential hazards.

Never use the corkscrew in damp areas or near water, sinks or taps.

Never submerge the corkscrew or charger.

For indoor use only. Do not expose the corkscrew or charging unit to rain or other extreme conditions.





© 2012 BergHOFF Worldwide N.V., Belgium

BERGHOFFWORLDWIDE.COM